

# **Report on Tranche Condition D (i)**

## **Utilization of Conditional Grants in Accordance with Agreed Eligibility Criteria**



Taluka Municipal Administration - Tharparkar

TMA – Mithi

TMA – Nagarparkar

**Saghir Hussain Mallah  
Consultant F&G Specialist  
Local Support Unit  
Tharparkar**

## **History of Tharparkar**

When the British annexed Sindh in 1843, Sir Charles Napier became “victor” of Sindh and what is now “Thar” was merged into Katchh Political Agency & Hyderabad Collectorate. In 1860 it was renamed as “Eastern Sindh Frontier” with its headquarter based at Umerkot headed by a Political Superintendent. In 1882, it was re-identified as district and its administrative head was Deputy Commissioner. The headquarters were shifted from Umerkot to Mirpurkhas in 1906. The present district has been carved out of district Mirpurkhas in 1990 as District Thar and its name was re-notified as Tharparkar in 1993.

Tharparkar district is specially named according to the geographical conditions ie Thar & Parker. “Thar” means desert while Parker refers (a rocky and hilly terrain) means to cross-over.

## **Location and Area**

The current district headquarter is Mithi situated at a distance of about 150 kms southeast of Mirpurkhas. It is situated at 22-26 degree north latitude and 69-51 degree east longitude. Districts Mirpurkhas bounds Thar District while District Umerkot lying in the north, India in the east, district Badin in the west and Runn of Kutch in the south.

Tharparkar is the largest district spread over an area of 47, 91,025 acres (19,637 sq kms) with a population of just under a million (according to Census 1998). District Tharparkar is divided into four Talukas and 44 Union councils for administrative purposes. The district has more than two thousand villages. The area of district is predominantly comprised of desert. Each village contains average 80 households.

## **Population**

The District Tharparkar comprises 04 Taluka (Mithi, Chachro, Diplo and Nagarparkar), 44 Union Councils and 2005 villages covering area of 19638 sq kms with population of 9, 14,290 souls is backward area and has remained inn drought since couple off years. Its economy depends upon the rainfall, if reasonable rain does not occur then almost half of the population of the District migrates to the barrage areas to earn their livelihood

## **Entertainments**

In Mithi there is an historical “Gaddi Bhit” which is recreation point especially in rainy days. In night whole city of Mithi can be seen lightening from this Gaddi Bhit. This bhit has a resemblance with Damam e Koh of Islamabad.

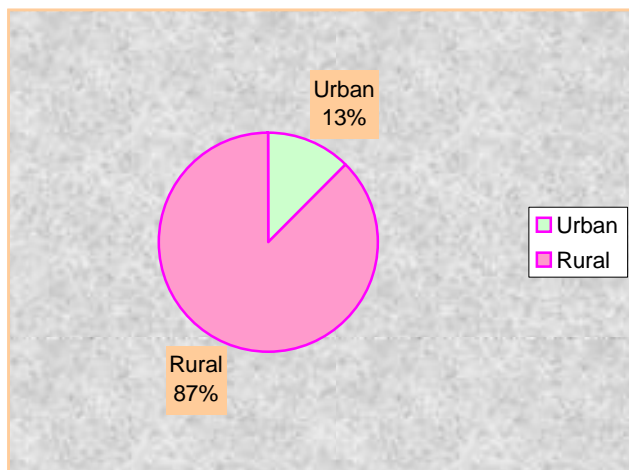
## 1. Taluka Mithi

Mithi is one of the oldest town of Sindh province and District head quarter of Tharparkar. Mithi town is connected with District Badin, Mirpurkhas and Umerkot with pacca road. Mithi town is also connected with Taluka Diplo, Nagarparkar and Chachro with pacca road. The coalfield with estimated reserves of around 200 billions tones of good quality is situated in taluka Mithi and at distance around 400 kms in north east of Karachi. The coal is being developed as a fuel, especially for power generation, which is enough to meet fuel requirements of the country for centuries and would provide a sustainable and reliable power generation.

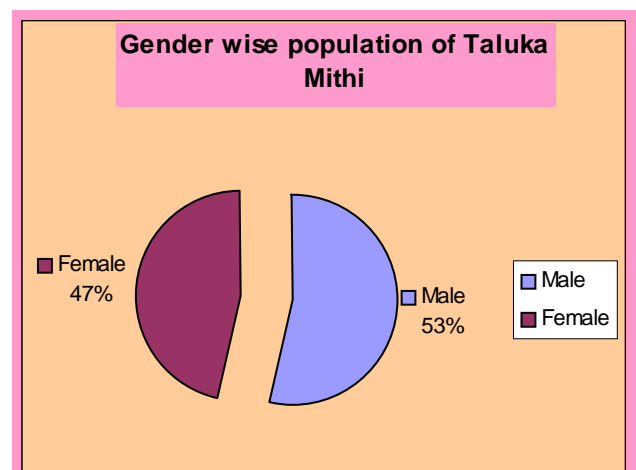
### Population of Taluka Mithi

Taluka Mithi covers an area about 5340 sq km and exists on 12 union councils with population of 241548 souls. Mithi Taluka comprising on totally desert area except 07 dehs (revenue unit) of union council Mohrano, which are barrage area.

ADMN-Unit	Area (SQ Km)	Population 1998							Population on 1981	1981-98 average Annual Growth Rate (%age)
		Both Sexes	Male	Female	Sex Ratio	Population Density per Esq. KM	Urban Population	Average H. hold Size		
1	2	3	4	5	6	7	8	9	10	11
Mithi Taluka	5340	241548	129143	112405	114.9	45.2	12.5	5.6	154431	2.66



Population area wise



Gender wise population

The graphic chart elaborates the gender and area wise position of taluka. The majority of the population lives in the rural areas. The land is fertile and 95 % depends on rainfall; rural areas are agro based and engage the manpower in the agriculture and live stock sector. The seasonal agricultural crops of the area are BAJRA, Guwar, Mong, Moth and Tir etc. On barrage area the main crops are wheat, sugarcane, chilly, cotton etc. In over all the people dependable on rain, with out rain there occurs a drought and people depend upon relief.

### **Poverty Profile.**

Apart from rain-dependent subsistence of local people the other important economic activity is day labor in the irrigated agricultural areas along the Indus River. This activity requires seasonal migration to these irrigated areas mostly covers by foot to hundreds of kilometers. Due to the precarious Economic situation and the lack of local resources, poverty and household economic vulnerability affects much of the population and there is a high dependency on moneylenders and other informal credit sources that are the only sources available to the poor. Most families take loans regularly and the terms of these loans are extremely unfavorable and exploitative. The poorest families are constantly in debt as they are usually only able to pay the high interest on their loans.

Cultural barriers, dowry system, early child marriages, child labor, less schooling particularly for girls, limited health facilities, land rights, snake bites and particularly the accessibility to water are the paramount problems of the area. People in villages mostly have common problem to face regularly is accessibility to water; as they fetch it out from three hundred deep dug-wells, mostly constructed far from houses.



Women in groups fetching water from well



Women are working in the field

## Occupation

Due to lack of economic opportunities, production of handcrafted items including carpets has been a traditional source for poorest families and after the carpet market has been promoted since last couple of years poor people have tremendously involved in it. Contractors provide the link between the carpet weaving families and the market. The contractors own the looms and provide raw materials on credit to the families. Because the terms of the loans are so unfavorable and the contractors own the assets, weaver families put their children on looms to work from dawn to dusk and earn a very small proportion of the value of the carpets and being trapped in a cycle of continuing poverty.



## Products of Mithi

In taluka Mithi there are so many cottage industries for which the main product is carpet, blankets, silky and cotton shalls are being made on hand looms

## SDSSP in 2004-2005

During 2004-2005 funding grids SDSSP supported in Education and health sector according the PFC SDSSP Grant Distribution Formula across districts and TMAs;

Share of District 70 %  
Share of Taluka Municipal Administration 30%

Indicator	2004-05	2005-06	2006-07
	Weightage (%)		
Population	50	50	50
Backwardness	30	30	30
Equal share	20	20	20
Performance	0	10	10

## SDSSP activities in Taluka Mithi

In year 2004-05 the SDSS Program initiated its activities in taluka Mithi. The status of allocation and utilization is as under

Allocation	Utilization	%
5.705 M	5.705 M	100

As per TMA sectoral planning the SDSSP allocation was almost used in water supply 53%, Drainage 35% and solid waste management 12% sectors. Because these are the sectors which any TMA is focusing. The details of schemes are as under.

### Water Supply Schemes

S #	Name and Location of Scheme	Name of Unit	Name of Target UC	Cost (Million)	Utilization %	Status
1	Rehabilitation of water supply Mithi Boring of Tube Well 02 Units	Mithi	Mithi	2	100.00	Functional
2	Rehabilitation of water supply Islam Kot Boring of Tube well	Islam Kot	Islam Kot	1.00.	100.00	Functional

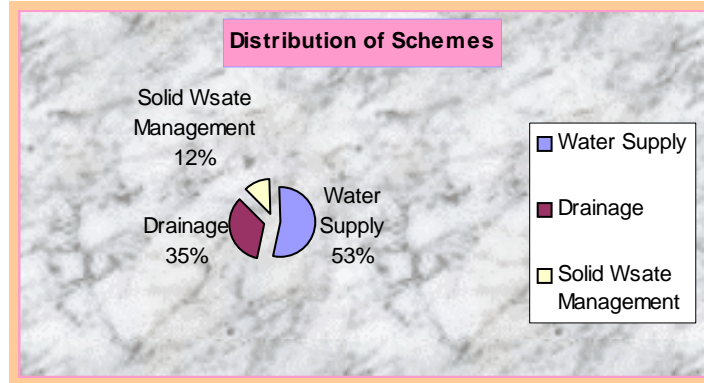
### Drainage Schemes

S #	Name and Location of Scheme	Name of Unit	Name of Target UC	Cost (Million)	Utilization %	Status
1	Rehabilitation of drainage scheme Mithi	Mithi	Mithi	2	100.00	Functional

### Solid Waste Management

S #	Name and Location of Scheme	Name of Unit	Name of Target UC	Cost (Million)	Utilization %	Status
1	Supply of Massy Tractor-240 units 02	Mithi & Islam Kot	Mithi & Islam Kot	0.705	100.00	Functional

The schemes initiated and completed vindicate the needs of the urban areas. It is a fact that due to the pressure of the population urban areas of having more needs of water supply, drainage and solid waste management facilities. The bellow given graph would elaborate the ratio of schemes and also define the accomplishment of the needs of common masses.



### Analysis of Schemes

The above scheme crystallizes a fact that the selection of schemes was made on need based because Mithi and Islamkot towns are thickly populated. So there fore keeping the public demand in mind and assessing the needs of common people the schemes were prioritized for the common masses. All these schemes are functional and meeting the needs of citizens

### TMA Nagarparkar

Nagarparkar is one of the oldest town of province of Sindh and Taluka head quarter. Nagarparkar is connected with pacca road with district head quarter Mithi. The Taluka council Nagarparkar came into existence in the month of August 2001. Taluka administration is executing development schemes from the saving of Octrai Zila tax share, major share is being paid against the head of monthly salary. Thar is going to be developed with road infrastructures but despite of that camel is believed as plane of this desert in respect of transportation.

Health facilities are not sufficient in the area only one Taluka Hospital, 5 Basic Health Units and 5 government dispensaries are functional for the population of 153106 souls, which are likely to be enhanced. As shown in the chart

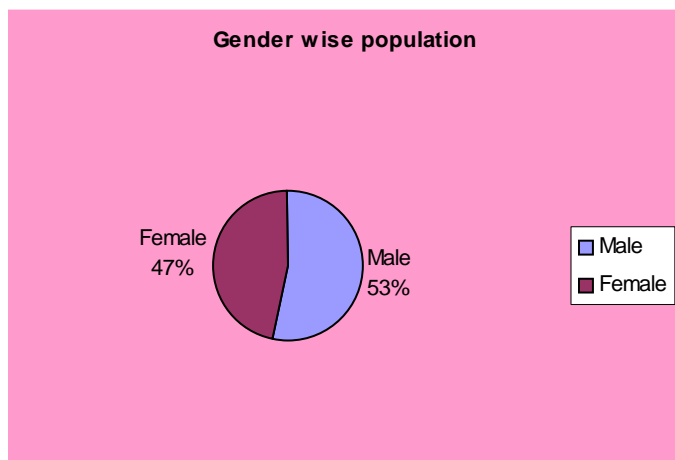
### Health facilities in Nagarparkar

Health Facilities	Taluka Nagarparkar		
	Ft.	N Ft.	Under Con
Civil Hospital	-	-	-
Taluka Hospital	1	-	-
RHC	-	-	-
BHU	5	-	-
Govt. Dispensary	5	9	-
Unani Shifa Khana	-	-	-
MCH/Maternity Home	-	-	-
First Aid Medical centre	-	1	-
<b>Total</b>	<b>11</b>	<b>10</b>	<b>-</b>

## Population TMA Nagarparkar

Taluka Nagarparkar covers an area about 3862 sq km and exists on 07 union councils with population of 153106 souls. Nagarparkar Taluka comprising on totally desert area

Admn-Unit	Area	Population 1998							Population on 1981	1981-98 average Annual Growth Rate (%age)
	Area (SQ Km)	Both Sexes	Male	Female	Sex Ratio	Population Density per sq. km	Urban Population	Average H. hold Size		
1	2	3	4	5	6	7	8	9	10	11
Nagarparkar	3862	153106	81427	71679	113.6	39.6	-	5.2	104559	2.27



Gender wise population

The graphic chart elaborates the gender wise position of taluka. The Nagarparkar is purely desert and hilly area 100% of the population lives in the rural areas. The land is fertile and 95 % depends on rainfall; rural areas are agro based and engage the manpower in the agriculture and live stock sector. The seasonal agricultural crops of the area are BAJRA, Guwar, Mong, Moth and Tir etc. In over all the people dependable on rain, with out rain there occurs a drought and people depend upon relief

## Occupation

Mostly people are engaged in agriculture and livestock. The land is fertile depends upon rain. People of the area getting drinking water from under ground source ie wells and Tube wells. Under ground water is mostly brackish and salty not drinkable, in rainy days people store rainwater in small wells made inside their homes.

Most of people, particularly women have responsibility to fetch water in pitchers taking-up over their heads.

### Historical Places

GORI

Gori contains a very fine old temple; it is a symbol of unique ancient construction.

Nagarparkar

Vira wah

Bhalwa

Bhodisar

Warwai

Kasbo

Karoojhar Mountain

### SDSSP Activities in Taluka Nagarparkar

In year 2004-05 the SDSS Program initiated its activities in taluka Nagarparkar. The status of allocation and utilization is as under

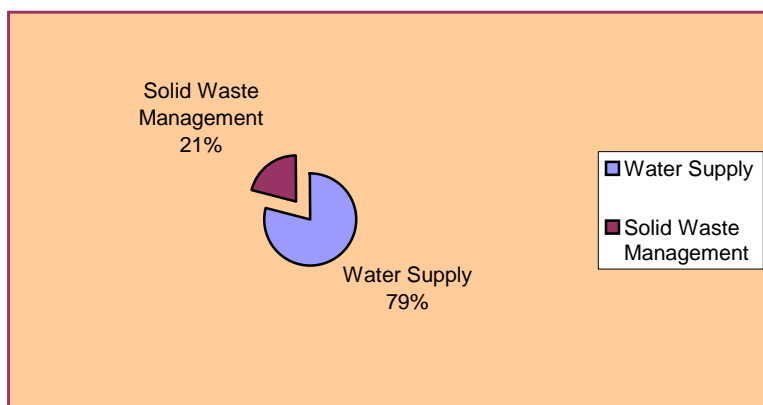
Allocation	Utilization	%
3.480712 M	2.998949 M	86.15

As per TMA sectoral planning the SDSSP allocation was almost used in water supply 79%, and 21% on solid waste management sectors. Because these are the sectors which any TMA is focusing. The details of schemes are as under.

S #	Name and Location of Scheme	Name of Unit	Name of Target UC	Cost (Million)	Utilization %	Status
1	PLJ & testing Ac pipe distribution system for water supply scheme Heera Deda	Heera Deda	Tiguser	0.98	86.00	Functional
2	PLJ & testing Ac pipe distribution system for water supply scheme Kasbo to Sindhori	Kasbo to Sindhori	Pithapar	1.00	108%	Functional
3	PLJ & testing Ac pipe distribution system for water supply scheme Nagarparkar	Nagarparkar	Nagarparkar	0.38	85.00	
4	PLJ & testing Ac pipe distribution system for water supply scheme Adhigam	Adhigam	Nagarparkar	0.48	-	Water supply line. Work will be started after testing ground water

## Solid Waste Management

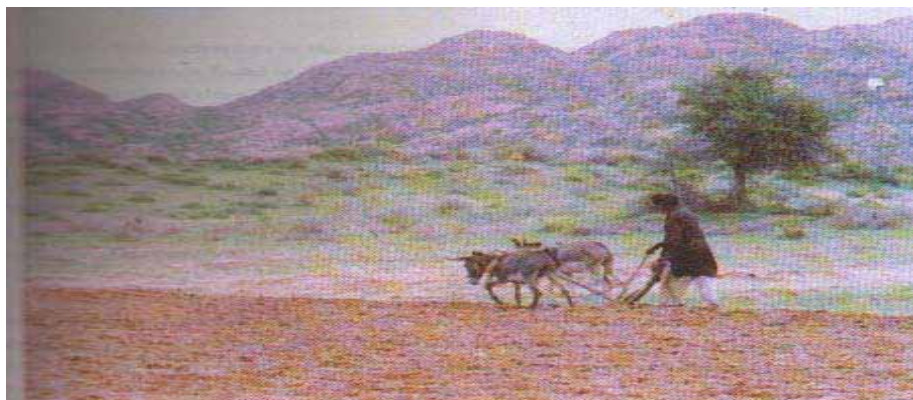
S #	Name and Location of Scheme	Name of Unit	Name of Target UC	Cost (Million)	Utilization %	Status
1	Supply of Massy Tractor with trolley	Nagarparkar	Nagarparkar	0.75	100.00	Functional



Distribution of funds

## Poverty Profile.

Apart from rain-dependent subsistence of local people the other important economic activity is day labor in the irrigated agricultural areas along the Indus River. This activity requires seasonal migration to these irrigated areas mostly covers by foot to hundreds of kilometers. Due to the precarious Economic situation and the lack of local resources, poverty and household economic vulnerability affects much of the population and there is a high dependency on moneylenders and other informal credit sources that are the only sources available to the poor. Most families take loans regularly and the terms of these loans are extremely unfavorable and exploitative. The poorest families are constantly in debt as they are usually only able to pay the high interest on their loans.



Former Irrigating Land

## **TMA Chachro and Diplo**

The TMA Chachro and Diplo could not access to the conditional Grant due to delay in the submission of the ASPs. Both the TMA Diplo have been released the 50% of conditional grant in 2005-06. The proposed schemes of TMA Diplo are in the process of issuing the work orders and it is expected the work will start soon. While for the schemes of TMA Chachro NIT will be called soon

## **SDSSP Conditionalities for the Grant**

The SDSS Program as discussed above has given autonomous status to utilized the conditional grants keeping their needs and priorities before them, but also on other hand technically bounded districts to remain within a parameters while accessing and utilizing the conditional grants. The salient features of the Conditionalities are as under.

- TMAs signed MoU.
- Prepared ASPs
- No schemes was above than 5.7 million
- TMAs used conditional grant in the first instance for rationalization, operationalization, and rehabilitation of existing schemes.
- TMAs did not use conditional grant on luxury items
- TMAs used funds for pro poor and gender balancing projects.
- TMAs followed all the planning, budgeting, and approval process.

## **Schemes Selection Criteria**

On the basis of situation analysis in Health, Education and TMAs sectors recommendations were made to the district government for the support to include the schemes in ASP of Health, Education and TMAs. After the identification of schemes the SDSSP designed annual sector plan format was adopted and every scheme was measured on as per requirements of the ASP and were finalized for the approval of PSU Later on these schemes were put as the part while developing the Annual Sector Plan (ASP). District Nazim, EDOs (F & P, Health and Education), TMAs officials and with the consultation of District Coordination officer schemes were screened.

## **Planning And Budget Approval Process**

District Government Tharparkar is enjoying the self-governance structure after the devolution plan 2001. District Nazim Mr. Arbab Anwer is a young and energetic and posses strong political background. Being a local he is well aware regarding the situation of district and under stand and which area needs to be developed on priority bases.

The SDSSP is providing funding directly to the district government and TMAs, which has further strengthened this mechanism to serve the people at the grass root level.

These funds directly come to District account iv and TMA account, where these funds are further distributed on PFC share formula 70% and 30% to District government TMAs respectively. All the schemes identified are passes through the formation of PC-1, which later on passed in the assembly. Then District Development Committee approves the scheme and administrative and other orders are released to dispatch the funds.

The concerned EDOs (F & P, Health and education) and TMAs officials are consulted with themselves in whole of the process.

### **User Experience**

While discussing the SDSS program its implementation mechanism following District functionaries were contacted. There experience regarding program is visible from their comments.

**Mr. Syed Juman Shah**  
**EDO Finance and Planning Tharparkar**

**Q.1. How do you view SDSS Program?**

This a good program

**Q.2. How do you view the drawing and disbursement process?**

Up to the mark

**Q.3. How do you feel SDSS Program differs from other Donor supported programs?**

I have no experience about donor imparted program

**Q.4. What were the capacity constraints of district, while preparing Annual Sector Plan?**

Comparatively better

**Q.5. How far do you think that involvement of elected representatives in planning process is positive change for development?**

Tharparkar is backward district in Sindh; people have no knowledge about planning processes. There fore trainings should be imparted for elected representatives, lower staff of Finance and Planning.

**Q.6. What was the process adopted for sectoral bifurcation of SDSSP conditional grant particularly in Education and Health sectors?**

55% for Education and 45% for Health

**Q.7. Any other suggestions**

A lengthy process/ series of formats are to be filled. As you know that there is shortage of staff particularly technical staff. It is suggested that formats process should be simplified.

**Mr. Prem Kumar TMO & TO (I&S) TMA Mithi**

**1. How do you view SDSS Program?**

- This is very good program

**2. How do you view the drawing and disbursement process?**

- Better but requires to be at the level of TMO/TO

**3. How do you feel SDSS Program differs from other Donor supported programs?**

- This program allows TMA to invest in WSS sector, which is our need.

## **Conclusion**

The District Government is highly cooperative all the activities are performed with mutual understanding and participation..

SDSS Program guidelines were adopted Conditional ties focused and all procedural formalities were accomplished. The District Government and TMA while in its sectoral planning heeded on following issues for proper and better accomplishment

## **Check List**

- The TMA utilized funds in Water Supply and Sanitation sector.
- As per criteria no scheme was above than 5.7 million.
- The TMA utilized grants for rationalization, operationalization, and rehabilitation.
- No luxury items were purchased.
- Pro poor areas were focused.
- The TMAs followed planning, budgeting and approval process.

## **Enclosed Annexure With Hard Copies**

1. MoU of TMAs

Annex - A